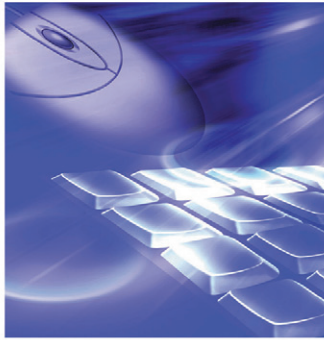




LAN CABLE

LOCAL AREA NETWORK CABLE



CONTENTS

- 2 CATEGORY 6 4PAIR (UTP)
- 3 ENHANCED CATEGORY 6 4PAIR (UTP)
- 4 CATEGORY 5e 4PAIR (UTP)
- 5 ENHANCED CATEGORY 5e 4PAIR (UTP)
- 6 CATEGORY 5 2, 4PAIR (UTP)
- 7 CATEGORY 5 25, 50, 100PAIR (UTP)
- 8 CATEGORY 3 25 ~ 600PAIR (UTP)
- 9 CATEGORY 5e 4PAIR (FTP)
- 10 CATEGORY 6 4PAIR (FTP)
- 11 OUTDOOR CATEGORY 5 25, 50, 100PAIR (UTP)
- 12 OUTDOOR CATEGORY 3 25 ~ 300PAIR (UTP)
- 13 ISO 9001 CERTIFICATE
- 14 ISO 14001 CERTIFICATE
- 15 UL CERTIFICATE
- 16 CE MARK



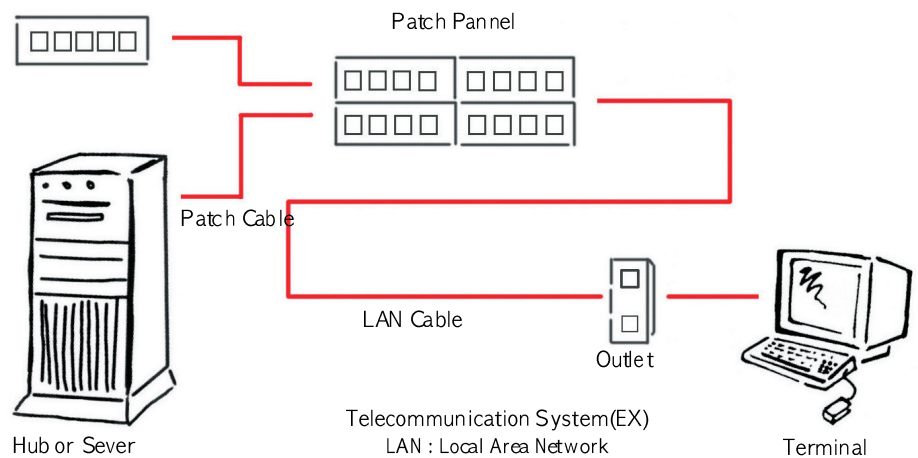
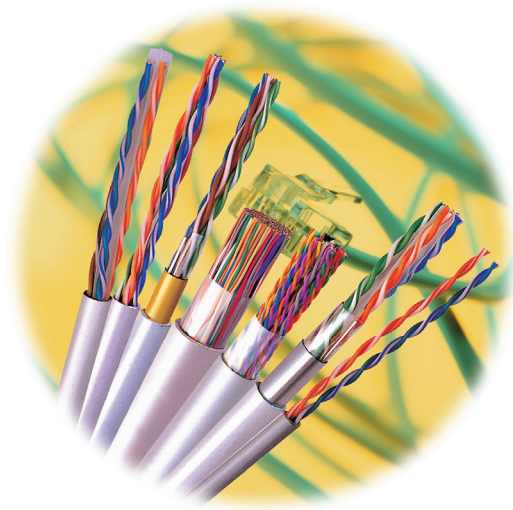
G AON is pleased to introduce data cables to you.

The modern society is a highly information-oriented society requiring an incessant creation of updated telecommunication technology.

Cables are currently the most popular means for transmitting information between nodes in network, although wireless transmission schemes are becoming more widely used.

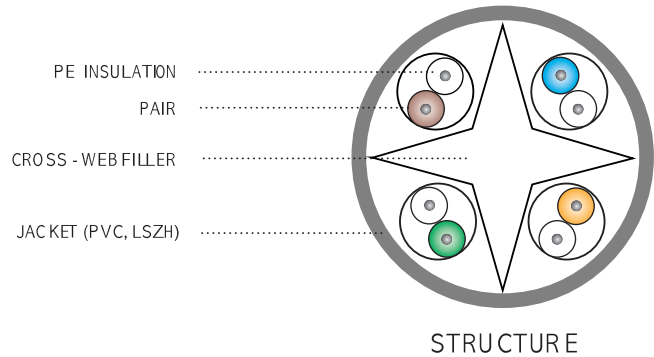
In this point of view, the efficiency of the system greatly depends on the performance of the cable.

You will find that we offer satisfaction of local area network(LAN) cables which are necessary to construct your communication system.



Category 6 4

UTP(Unshielded Twisted Pair)



DESCRIPTION

Item	Pair	Conductor	Outer Diameter (Nom.mm)	Weight (Approx. kg/300m)	Standard Length (m)	Packing
CAT.6 CMX,CM,CMR,LSZH	4	Solid Bare Copper (24A WG)	6.2	12	300	Box Reel n Box

SPECIFICATION

- ▶ ANSI/EIA/TIA - 568B. 2-1
- ▶ ISO/IEC 11801
- ▶ UL 444

FLAME TEST

- ▶ UL 1581 (CMX)
- ▶ UL 1685 (CM)
- ▶ UL 1666 (CMR)
- ▶ IEC 60754, 332-1

APPLICATION

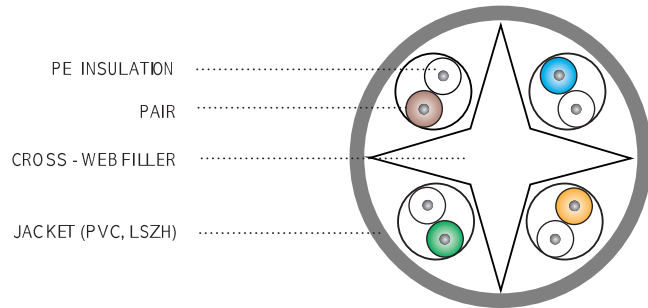
- ▶ High Speed Horizontal Cabling (250MHz)
- ▶ 155 / 622 Mbps ATM
- ▶ Gigabit Ethernet
- ▶ 10 / 100 / 1000 Base-T
- ▶ 100 Mbps Fast Ethernet

ELECTRICAL PROPERTIES

- ▶ Conductor Resistance 9.38 Ω / 100m ↓
- ▶ Resistance Unbalance 5.0% ↓
- ▶ Mutual Capacitance 5.6nF / 100m ↓
- ▶ Capacitance Unbalance 330pF / 100m ↓
- ▶ Characteristics Impedance 100 ±15 Ω

Frequency (MHz)	RL (Min. dB)	IL (Max.dB/100m)	NEXT (Min. dB)	PSNEXT (Min. dB)	ELFEXT (MindB/100m)	PSELFEXT (MindB/100m)	DELAY (Max.rs/100 m)	SKEW (Max.rs/100 m)
0.772	-	1.8	76.0	74.0	70.0	67.0	-	-
1	20.0	2.0	74.3	72.3	67.8	64.8	570	45
4	23.0	3.8	65.3	63.3	55.8	52.8	-	-
8	24.5	5.3	60.8	58.8	49.7	46.7	-	-
10	25.0	6.0	59.3	57.3	47.8	44.8	545	45
16	25.0	7.6	56.2	54.2	43.7	40.7	-	-
20	25.0	8.5	54.8	52.8	41.8	38.8	-	-
25	24.3	9.5	53.3	51.3	39.8	36.8	-	-
31.25	23.6	10.7	51.9	49.9	37.9	34.9	-	-
62.5	21.5	15.4	47.4	45.4	31.9	28.9	-	-
100	20.1	19.8	44.3	42.3	27.8	24.8	-	-
200	18.0	29.0	39.8	37.8	21.8	18.8	-	-
250	17.3	32.8	38.3	36.3	19.8	16.8	536	45

Enhanced Category 6 4 Pair UTP(Unshielded Twisted Pair)



STRUCTURE

DESCRIPTION

Item	Pair	Conductor	Outer Diameter (Nom.mm)	Weight (Approx. kg/300m)	Standard Length (m)	Packing
CAT.6 CMX,CM,CMR,LSZH	4	Solid Bare Copper (24AWG)	6.2	12	300	Box Reel in Box

SPECIFICATION

- ▶ ANSI/EIA/TIA - 568B. 2-1
- ▶ ISO/IEC 11801
- ▶ UL 444

FLAME TEST

- ▶ UL 1581 (CMX)
- ▶ UL 1685 (CM)
- ▶ UL 1666 (CMR)
- ▶ IEC 60754, 332-1

APPLICATION

- ▶ High Speed Horizontal Cabling (350MHz)
- ▶ 155/622 Mbps ATM
- ▶ Gigabit Ethernet
- ▶ 10/100/1000 Base-T
- ▶ 100 Mbps Fast Ethernet

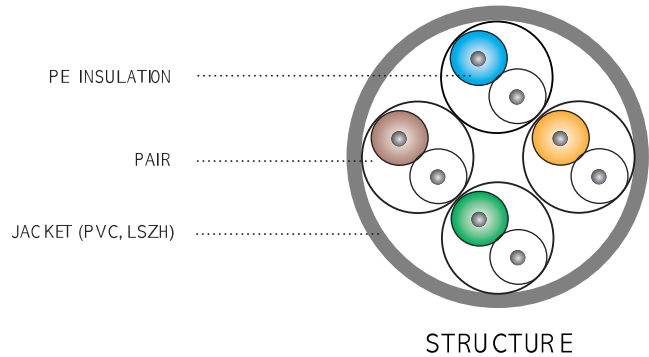
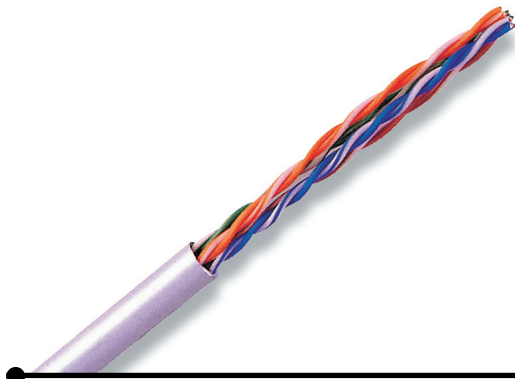
ELECTRICAL PROPERTIES

- ▶ Conductor Resistance 9.38 Ω / 100m ↓
- ▶ Resistance Unbalance 5.0% ↓
- ▶ Mutual Capacitance 5.6nF / 100m ↓
- ▶ Capacitance Unbalance 330pF / 100m ↓
- ▶ Characteristics Impedance 100 \pm 15 Ω

Frequency (MHz)	RL (Min. dB)	IL (Max.dB/100m)	NEXT (Min. dB)	PSNEXT (Min. dB)	ELFEXT (Min.dB/100m)	PSELFEXT (Min.dB/100m)	DELAY (Max.rs/100m)	SKEW (Max.rs/100m)
0.772	-	1.8	78.0	76.0	72.0	69.0	-	-
1	21.0	2.0	76.3	74.3	69.8	66.8	570	45
4	24.0	3.8	67.3	65.3	57.8	54.8	-	-
8	25.5	5.3	62.8	60.8	51.7	48.7	-	-
10	26.0	6.0	61.3	59.3	49.8	46.8	545	45
16	26.0	7.6	58.2	56.2	45.7	42.7	-	-
20	26.0	8.5	56.8	54.8	43.8	40.8	-	-
25	25.3	9.5	55.3	53.3	41.8	38.8	-	-
31.25	24.6	10.7	53.9	51.9	39.9	36.9	-	-
62.5	22.5	15.4	49.4	47.4	33.9	30.9	-	-
100	21.1	19.8	46.3	44.3	29.8	26.8	-	-
200	19.0	29.0	41.8	39.8	23.8	20.8	-	-
250	18.3	32.8	40.3	38.3	21.8	18.8	-	-
350	17.3	39.8	38.1	36.1	18.9	15.9	536	45

Category 5e 4 Pair

UTP(Unshielded Twisted Par)



DESCRIPTION

Item	Pair	Conductor	Outer Diameter (Nom.mm)	Weight (Approx. kg/300m)	Standard Length (m)	Packing
CAT. 5E CMX,CM,CMR,LSZH	4	Solid Bare Copper (24A WG)	5.0	9	300	Box

SPECIFICATION

- ▶ ANSI/EIA/TIA - 568B. 2
- ▶ ISO/IEC 11801
- ▶ UL 444

FLAME TEST

- ▶ UL 1581 (CMX)
- ▶ UL 1685 (CM)
- ▶ UL 1666 (CMR)
- ▶ IEC 60754, 332-1

APPLICATION

- ▶ High Speed Horizontal Cabling (100MHz)
- ▶ 155 Mbps ATM
- ▶ 10/100 Base-T
- ▶ 100 Mbps Fast Ethernet

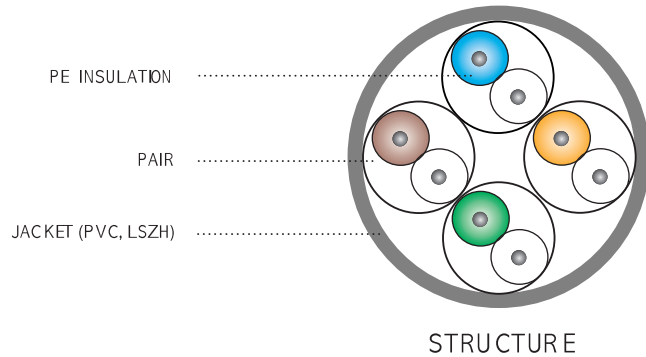
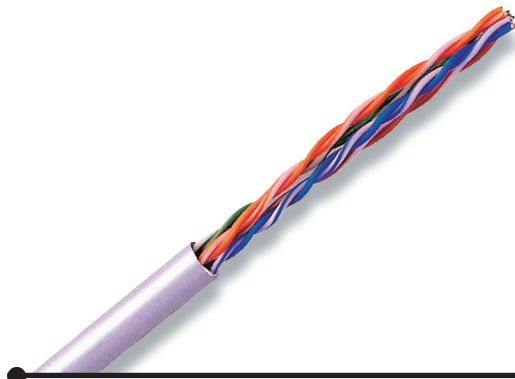
ELECTRICAL PROPERTIES

- ▶ Conductor Resistance 9.38 Ω / 100m ↓
- ▶ Resistance Unbalance 5.0% ↓
- ▶ Mutual Capacitance 5.6nF / 100m ↓
- ▶ Capacitance Unbalance 330pF / 100m ↓
- ▶ Characteristics Impedance 100 \pm 15 Ω

Frequency (MHz)	RL (Min. dB)	IL (Max.dB/100m)	NEXT (Min. dB)	PSNEXT (Min. dB)	ELFEXT (MindB/100m)	PSELFEXT (MindB/100m)	DELAY (Max.rs/100 m)	SKEW (Max.rs/100 m)
0.772	-	1.8	67.0	64.0	66.0	63.0	-	-
1	20.0	2.0	65.3	62.3	63.8	60.8	570	45
4	23.0	4.1	56.3	53.3	51.7	48.7	-	-
8	24.5	5.8	51.8	48.8	45.7	42.7	-	-
10	25.0	6.5	50.3	47.3	43.8	40.8	545	45
16	25.0	8.2	47.3	44.3	39.7	36.7	-	-
20	25.0	9.3	45.8	42.8	37.7	34.7	-	-
25	24.3	10.4	44.3	41.3	35.8	32.8	-	-
31.25	23.6	11.7	42.9	39.9	33.9	30.9	-	-
62.5	21.5	17.0	38.4	35.4	27.8	24.8	-	-
100	20.1	22.0	35.3	32.3	23.8	20.8	538	45

Enhanced Category 5e 4

UTP(Unshielded Twisted Par)



DESCRIPTION

Item	Pair	Conductor	Outer Diameter (Nom.mm)	Weight (Approx. kg/300m)	Standard Length (m)	Packing
CAT. 5E CMX,CM,CMR,LSZH	4	Solid Bare Copper (24AWG)	5.1	9	300	Box

SPECIFICATION

- ▶ ANSI/EIA/TIA - 568B. 2
- ▶ ISO/IEC 11801
- ▶ UL 444

FLAME TEST

- ▶ UL 1581 (CMX)
- ▶ UL 1685 (CM)
- ▶ UL 1666 (CMR)
- ▶ IEC 60754, 332-1

APPLICATION

- ▶ High Speed Horizontal Cabling (350MHz)
- ▶ 155 Mbps ATM
- ▶ 10/100 Base-T
- ▶ 100 Mbps Fast Ethernet

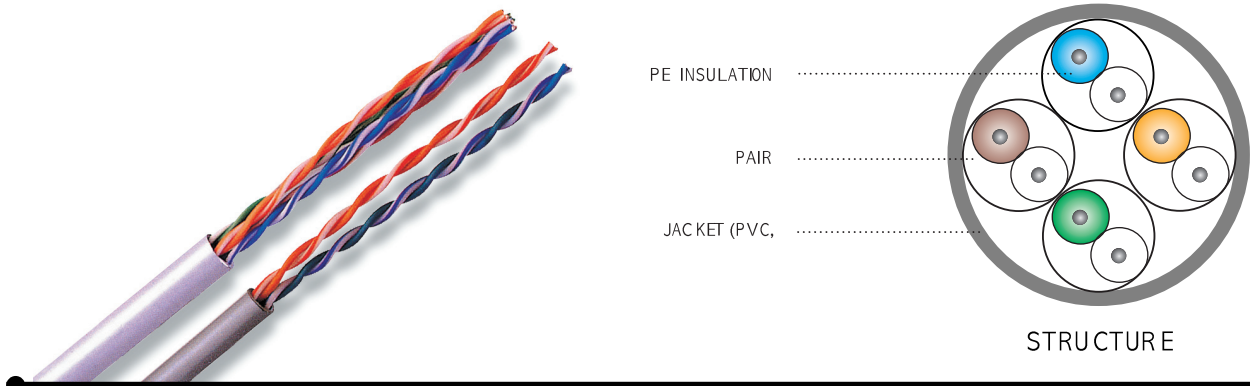
ELECTRICAL PROPERTIES

- ▶ Conductor Resistance 9.38Ω / 100m ↓
- ▶ Resistance Unbalance 5.0% ↓
- ▶ Mutual Capacitance 5.6nF / 100m ↓
- ▶ Capacitance Unbalance 330pF / 100m ↓
- ▶ Characteristics Impedance 100 ± 15Ω

Frequency (MHz)	RL (Min. dB)	IL (Max.dB/100m)	NEXT (Min. dB)	PSNEXT (Min. dB)	ELFEXT (Min.dB/100m)	PSELFEXT (Min.dB/100m)	DELAY (Max.ns/100 m)	SKEW (Max.ns/100 m)
0.772	-	1.8	70.0	67.0	68.2	65.2	-	-
1	22.0	2.0	68.3	65.3	66.0	63.0	570	45
4	25.0	4.1	59.3	56.3	54.0	51.0	-	-
8	26.5	5.8	54.8	51.8	47.9	44.9	-	-
10	27.0	6.5	53.3	50.3	46.0	43.0	545	45
16	27.0	8.2	50.3	47.3	41.9	38.9	-	-
20	27.0	9.3	48.8	45.8	40.0	37.0	-	-
25	26.3	10.4	47.3	44.3	38.0	35.0	-	-
31.25	25.6	11.7	45.9	42.9	36.1	33.1	-	-
62.5	23.5	17.0	41.4	38.4	30.1	27.1	-	-
100	22.1	22.0	38.3	35.3	26.0	23.0	-	-
200	20.0	32.4	33.8	30.8	20.0	17.0	-	-
250	19.3	36.8	32.3	29.3	18.0	15.0	-	-
300	18.7	40.9	31.1	28.1	16.5	13.5	-	-
350	18.3	44.8	30.1	27.1	15.1	12.1	536	45

Category 5 2, 4 Pair

UTP(Unshielded Twisted Pair)



DESCRIPTION

Item	Pair	Conductor	Outer Diameter (Nom.mm)	Weight (Approx. kg/300m)	Standard Length (m)	Packing
CAT.5 CMX,CM,CMR,LSZH	2 4	Solid Bare Copper (24A WG)	4.5 5.0	5 9	300	Box

SPECIFICATION

- ▶ ANSI/EIA/TIA - 568B.2
- ▶ ISO/IEC 11801
- ▶ UL 444

FLAME TEST

- ▶ UL 1581 (CMX)
- ▶ UL 1685 (CM)
- ▶ UL 1666 (CMR)
- ▶ IEC 60754, 332-1

APPLICATION

- ▶ High Speed Horizontal Cabling (100MHz)
- ▶ 155 Mbps ATM
- ▶ 10/100 Base-T
- ▶ 100 Mbps Fast Ethernet

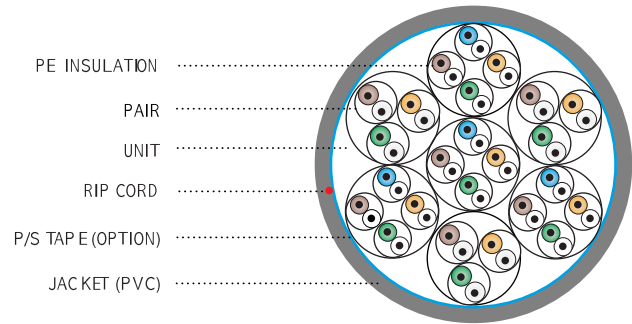
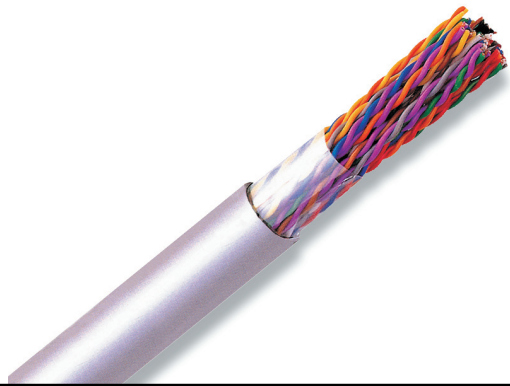
ELECTRICAL PROPERTIES

- ▶ Conductor Resistance 9.38Ω / 100m ↓
- ▶ Resistance Unbalance 5.0% ↓
- ▶ Mutual Capacitance 5.6nF / 100m ↓
- ▶ Capacitance Unbalance 330pF / 100m ↓

Frequency (MHz)	Characteristic Impedance(Z0) (ohms)	SRL (Min. dB)	IL (MaxdB/100m)	NEXT (Min. dB)	DELAY (Max.rs/100m)	SKEW (Max.rs/100m)
0.772	-	-	1.8	64.0	-	-
1	100±15	23.0	2.0	62.0	570	45
4	100±15	23.0	4.1	53.0	-	-
8	100±15	23.0	5.8	48.0	-	-
10	100±15	23.0	6.5	47.0	545	45
16	100±15	23.0	8.2	44.0	-	-
20	100±15	23.0	9.3	42.0	-	-
25	100±15	22.0	10.4	41.0	-	-
31.25	100±15	21.0	11.7	39.0	-	-
62.5	100±15	18.0	17.0	35.0	-	-
100	100±15	16.0	22.0	32.0	538	45

Category 5 25, 50, 100

UTP(Unshielded Twisted Pair)



STRUCTURE

DESCRIPTION

Item	Pair	Conductor	Outer Diameter (Nom.mm)	Weight (Approx. kg/300m)	Standard Length (m)	Packing
CAT.5 CMX,CM,CMR	25 50 100	Solid Bare Copper (24AWG)	13.0 19.5 26.0	51 105 190	300	Reel

SPECIFICATION

- ▶ ANSI/EIA/TIA - 568B. 2
- ▶ ISO/IEC 11801
- ▶ UL 444

FLAME TEST

- ▶ UL 1581 (CMX)
- ▶ UL 1685 (CM)
- ▶ UL 1666 (CMR)

APPLICATION

- ▶ Horizontal Distribution & Backbone Cabling (100MHz)
- ▶ 155 Mbps ATM
- ▶ 10 / 100 Base-T
- ▶ 100 Mbps Fast Ethernet

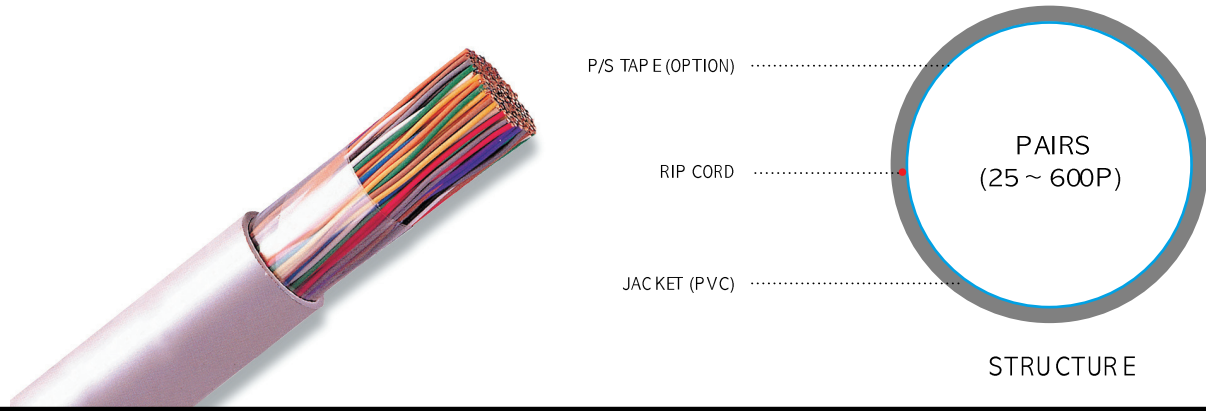
ELECTRICAL PROPERTIES

- ▶ Conductor Resistance 9.38Ω / 100m ↓
- ▶ Resistance Unbalance 5.0% ↓
- ▶ Mutual Capacitance 5.6nF / 100m ↓
- ▶ Capacitance Unbalance 330pF / 100m ↓

Frequency (MHz)	Characteristic Impedance(Z0) (ohms)	SRL (Min. dB)	IL (Max.dB/100m)	NEXT (Min. dB)
0.772	-	-	1.8	64.0
1	100±15	23.0	2.0	62.0
4	100±15	23.0	4.1	53.0
8	100±15	23.0	5.8	48.0
10	100±15	23.0	6.5	47.0
16	100±15	23.0	8.2	44.0
20	100±15	23.0	9.3	42.0
25	100±15	22.0	10.4	41.0
31.25	100±15	21.0	11.7	39.0
62.5	100±15	18.0	17.0	35.0
100	100±15	16.0	22.0	32.0

Category 3 25 ~

UTP(Unshielded Twisted Pair)



DESCRIPTION

Item	Pair	Conductor	Outer Diameter (Nom.mm)	Weight (Approx. kg/300m)	Standard Length (m)	Packing
CAT. 3 CMX,CM,CMR	25	Solid Bare Copper (24A WG)	9.5	40	300	Reel
	50		13.0	80		
	75		15.5	115		
	100		17.5	150		
	125		19.5	180		
	150		21.0	215		
	200		23.5	280		
	300		28.5	410		
	400		32.5	535		
	500		36.5	670		
600	39.5	795				

SPECIFICATION

- ▶ ANSI/EIA/TIA - 568B.2
- ▶ ISO/IEC 11801
- ▶ UL 444

FLAME TEST

- ▶ UL 1581 (CMX)
- ▶ UL 1685 (CM)
- ▶ UL 1666 (CMR)

APPLICATION

- ▶ Horizontal Distribution & Backbone Cabling (16MHz)
- ▶ 10 Base-T
- ▶ 4 Mbps Token Ring

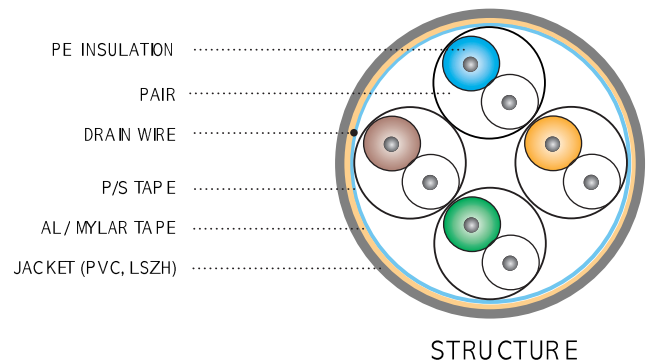
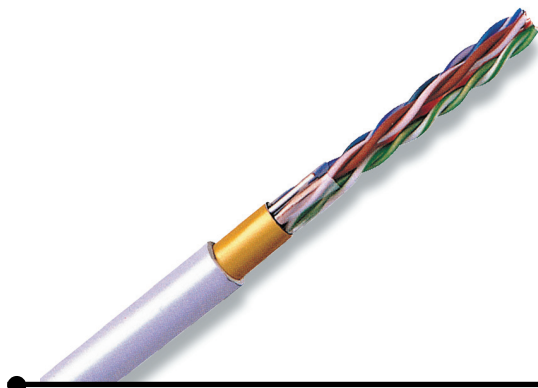
ELECTRICAL PROPERTIES

- ▶ Conductor Resistance 9.38Ω / 100m ↓
- ▶ Resistance Unbalance 5.0% ↓
- ▶ Mutual Capacitance 6.6nF / 100m ↓
- ▶ Capacitance Unbalance 330pF / 100m ↓

Frequency (MHz)	Characteristic Impedance(Z0) (ohms)	SRL (Min. dB)	IL (MaxdB/100m)	NEXT (Min. dB)	DELAY (Max.rs/100 m)	SKEW (Max.rs/100 m)
0.772	-	-	2.2	43.0	-	-
1	100±15	12.0	2.6	41.0	570	45
4	100±15	12.0	5.6	32.0	-	-
8	100±15	12.0	8.5	27.0	-	-
10	100±15	12.0	9.7	26.0	545	45
16	100±15	12.0	13.1	23.0	543	45

Category 5E 4 Pair

FTP(Foiled Twisted Pair)



DESCRIPTION

Item	Pair	Conductor	Outer Diameter (Nom.mm)	Weight (Approx. kg/300m)	Standard Length (m)	Packing
FTP CAT.5E CMX,CM,CMR,LSZH	4	Solid Bare Copper (24AWG)	6.4	13	300	Reel

SPECIFICATION

- ▶ ANSI/EIA/TIA - 568B.2
- ▶ ISO/IEC 11801
- ▶ UL 444

FLAME TEST

- ▶ UL 1581 (CMX)
- ▶ UL 1685 (CM)
- ▶ UL 1666 (CMR)
- ▶ IEC 60754, 332-1

APPLICATION

- ▶ High Speed Horizontal Cabling (100MHz)
- ▶ EMI Proof
- ▶ 155 Mbps ATM
- ▶ 10/100 Base-T
- ▶ 100 Mbps Fast Ethernet

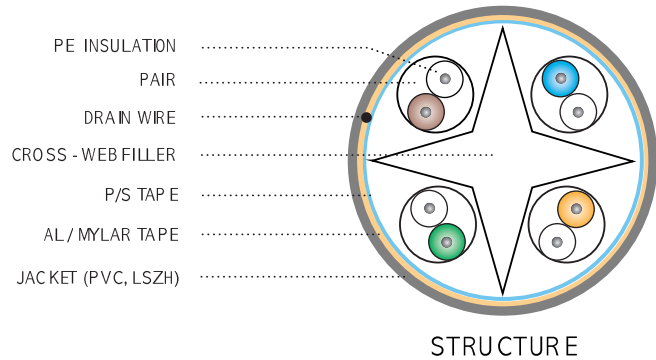
ELECTRICAL PROPERTIES

- ▶ Conductor Resistance 9.38Ω / 100m ↓
- ▶ Resistance Unbalance 5.0% ↓
- ▶ Mutual Capacitance 5.6nF / 100m ↓
- ▶ Capacitance Unbalance 330pF / 100m ↓
- ▶ Characteristics Impedance 100 ± 15Ω

Frequency (MHz)	RL (Min. dB)	IL (Max.dB/100m)	NEXT (Min. dB)	PSNEXT (Min. dB)	ELFEXT (Min.dB/100m)	PSELFEXT (Min.dB/100m)	DELAY (Max.rs/100 m)	SKEW (Max.rs/100 m)
0.772	-	1.8	67.0	64.0	66.0	63.0	-	-
1	20.0	2.0	65.3	62.3	63.8	60.8	570	45
4	23.0	4.1	56.3	53.3	51.7	48.7	-	-
8	24.5	5.8	51.8	48.8	45.7	42.7	-	-
10	25.0	6.5	50.3	47.3	43.8	40.8	545	45
16	25.0	8.2	47.3	44.3	39.7	36.7	-	-
20	25.0	9.3	45.8	42.8	37.7	34.7	-	-
25	24.3	10.4	44.3	41.3	35.8	32.8	-	-
31.25	23.6	11.7	42.9	39.9	33.9	30.9	-	-
62.5	21.5	17.0	38.4	35.4	27.8	24.8	-	-
100	20.1	22.0	35.3	32.3	23.8	20.8	538	45

Category 6 4 Pair

FTP(Foiled Twisted Pair)



DESCRIPTION

Item	Pair	Conductor	Outer Diameter (Nom.mm)	Weight (Approx. kg/300m)	Standard Length (m)	Packing
FTP CAT.6 CMX,CM,CMR,LSZH	4	Solid Bare Copper (24A WG)	7.5	16	300	Reel

SPECIFICATION

- ▶ ANSI/EIA/TIA - 568B. 2-1
- ▶ ISO/IEC 11801
- ▶ UL 444

FLAME TEST

- ▶ UL 1581 (CMX)
- ▶ UL 1685 (CM)
- ▶ UL 1666 (CMR)
- ▶ IEC 60754, 332-1

APPLICATION

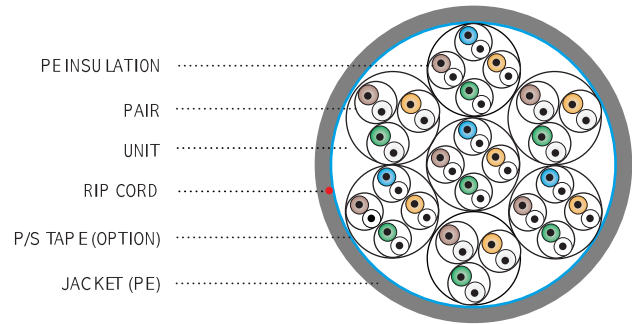
- ▶ High Speed Horizontal Cabling (250MHz)
- ▶ EMI Proof
- ▶ 155 / 622 Mbps ATM
- ▶ Gigabit Ethernet
- ▶ 10 / 100 / 1000 Base-T
- ▶ 100 Mbps Fast Ethernet

ELECTRICAL PROPERTIES

- ▶ Conductor Resistance 9.38 Ω / 100m ↓
- ▶ Resistance Unbalance 5.0% ↓
- ▶ Mutual Capacitance 5.6nF / 100m ↓
- ▶ Capacitance Unbalance 330pF / 100m ↓
- ▶ Characteristics Impedance 100 ±15 Ω

Frequency (MHz)	RL (Min. dB)	IL (Max.dB/100m)	NEXT (Min. dB)	PSNEXT (Min. dB)	ELFEXT (MindB/100m)	PSELFEXT (MindB/100m)	DELAY (Max.rs/100 m)	SKEW (Max.rs/100 m)
0.772	-	1.8	76.0	74.0	70.0	67.0	-	-
1	20.0	2.0	74.3	72.3	67.8	64.8	570	45
4	23.0	3.8	65.3	63.3	55.8	52.8	-	-
8	24.5	5.3	60.8	58.8	49.7	46.7	-	-
10	25.0	6.0	59.3	57.3	47.8	44.8	545	45
16	25.0	7.6	56.2	54.2	43.7	40.7	-	-
20	25.0	8.5	54.8	52.8	41.8	38.8	-	-
25	24.3	9.5	53.3	51.3	39.8	36.8	-	-
31.25	23.6	10.7	51.9	49.9	37.9	34.9	-	-
62.5	21.5	15.4	47.4	45.4	31.9	28.9	-	-
100	20.1	19.8	44.3	42.3	27.8	24.8	-	-
200	18.0	29.0	39.8	37.8	21.8	18.8	-	-
250	17.3	32.8	38.3	36.3	19.8	16.8	536	45

Outdoor Category 5 25, 50, 100 UTP(Unshielded Twisted Pair)



STRUCTURE

DESCRIPTION

Item	Pair	Conductor	Outer Diameter (Nom.mm)	Weight (Approx. kg/300m)	Standard Length (m)	Packing
CAT.5 PE	25	Solid Bare Copper (24AWG)	13.0	46	300	Reel
	50		19.5	95		
	100		26.0	180		

SPECIFICATION

- ▶ ANSI/EIA/TIA - 568B.2
- ▶ ISO/IEC 11801
- ▶ UL 444

APPLICATION

- ▶ Outdoor Use (100MHz)
- ▶ 155 Mbps ATM
- ▶ 10/100 Base-T

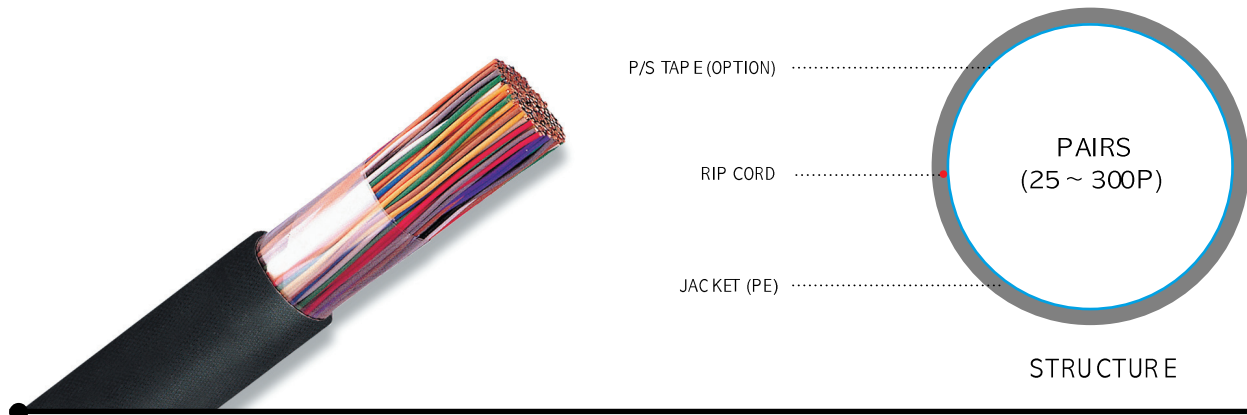
ELECTRICAL PROPERTIES

- ▶ Conductor Resistance 9.38Ω / 100m ↓
- ▶ Resistance Unbalance 5.0% ↓
- ▶ Mutual Capacitance 5.6nF / 100m ↓
- ▶ Capacitance Unbalance 330pF / 100m ↓

Frequency (MHz)	Characteristic Impedance(Z0) (ohms)	SRL (Min. dB)	IL (Max.dB/100m)	NEXT (Min. dB)
0.772	-	-	1.8	64.0
1	100±15	23.0	2.0	62.0
4	100±15	23.0	4.1	53.0
8	100±15	23.0	5.8	48.0
10	100±15	23.0	6.5	47.0
16	100±15	23.0	8.2	44.0
20	100±15	23.0	9.3	42.0
25	100±15	22.0	10.4	41.0
31.25	100±15	21.0	11.7	39.0
62.5	100±15	18.0	17.0	35.0
100	100±15	16.0	22.0	32.0

Outdoor Category 3 25 ~

UTP(Unshielded Twisted Pair)



DESCRIPTION

Item	Pair	Conductor	Outer Diameter (Nom.mm)	Weight (Approx. kg/300m)	Standard Length (m)	Packing
CAT. 3 PE	25	Solid Bare Copper (24A WG)	9.5	38	300	Reel
	50		13.0	75		
	75		15.5	110		
	100		17.5	140		
	125		19.5	170		
	150		21.0	205		
	200		23.5	265		
300	28.5	390				

SPECIFICATION

- ▶ ANSI/EIA/TIA - 568B. 2
- ▶ ISO/IEC 11801
- ▶ UL 444

APPLICATION

- ▶ Outdoor Use (16MHz)
- ▶ 10 Base-T
- ▶ 4 Mbps Token Ring

ELECTRICAL PROPERTIES

- ▶ Conductor Resistance 9.38Ω / 100m ↓
- ▶ Resistance Unbalance 5.0% ↓
- ▶ Mutual Capacitance 6.6nF / 100m ↓
- ▶ Capacitance Unbalance 330pF / 100m ↓

Frequency (MHz)	Characteristic Impedance(Z0) (ohms)	SRL (Min. dB)	IL (Max.dB/100m)	NEXT (Min. dB)
0.772	-	-	2.2	43.0
1	100±15	12.0	2.6	41.0
4	100±15	12.0	5.6	32.0
8	100±15	12.0	8.5	27.0
10	100±15	12.0	9.7	26.0
16	100±15	10.0	13.1	23.0

ISO 14001 Certificate

U N D E R W R I T E R S L A B O R A T O R I E S I N C .

E N V I R O N M E N T A L M A N A G E M E N T S Y S T E M R E G I S T R A T I O N

ISO 14001

Gaon Cable Co., Ltd.

Chonju Plant
#408 3rd Palbok-Dong
Chonju-City
Chonbuk 561-200 Korea

Underwriters Laboratories Inc.® (UL) issues this certificate to the Firm named above, after assessing the Firm's environmental management system and finding it in compliance with

ISO 14001:1996

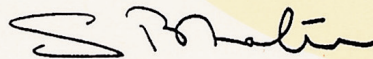
ENVIRONMENTAL MANAGEMENT SYSTEM
K S A 1 4 0 0 1 : 2 0 0 1

for the following scope of registration

The environmental management system of Gaon Cable Co., Ltd. associated with the design and manufacture of copper, UTP and fiber optical telecommunication cables and optical fibers at Chonju, Korea.

This environmental management system registration is included in UL's Directory of Registered Firms and applies to the operations of the address(es) shown above. By issuance of this certificate the firm represents that it will maintain its registration in accordance with the applicable requirements. This certificate is not transferable and remains the property of Underwriters Laboratories Inc. ®.

File Number: A13839
Volume: 1
Original Certification Date: April 18, 2005
ISO 14001 Issue Date: April 18, 2005
Renewal Date: April 17, 2008

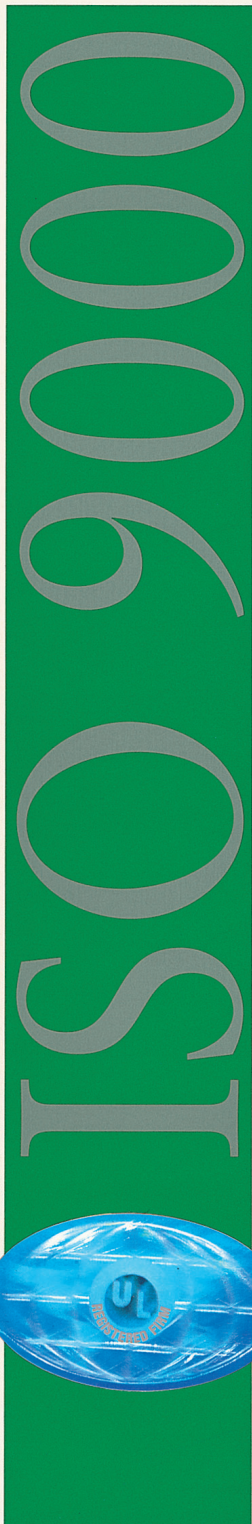


S. Joe Bhatia
Executive Vice President, International



ISO 9001 Certificate

UNDERWRITERS LABORATORIES INC.
CERTIFICATE OF REGISTRATION



GAON Cable Co., Ltd.

Chonju Plant
#408 3rd Palbok-Dong
Chonju-City
Chonbuk 561-200 Korea

with an off-site facility located at:

Sales Office
#275, Gongdeok-Dong
Mapo-Gu
Seoul 121-020 Korea

Underwriters Laboratories Inc.® (UL) issues this certificate to the Firm named above, after assessing the Firm's quality system and finding it in compliance with

ISO 9001:2000

EN ISO 9001:2000; BS EN ISO 9001:2000; ANSI/ASQ Q9001:2000; KS A 9001:2001

for the following scope of registration

3357 (US) : Drawing and Insulating of Nonferrous Wire

3229 (US) : Pressed and Blown Glass and Glassware, Not Elsewhere Classified

The design and manufacture of copper and fiber optic telecommunication cables and optical fibers.

The sales office located at Mapo-Gu, Seoul performs sales and marketing.

Further clarifications regarding the scope of this certificate and the applicability of ISO 9001:2000 requirements may be obtained by consulting the organization.

This quality system registration is included in UL's Directory of Registered Firms and applies to the provision of goods and/or services as specified in the scope of registration from the address(es) shown above. By issuance of this certificate the firm represents that it will maintain its registration in accordance with the applicable requirements. This certificate is not transferable and remains the property of Underwriters Laboratories Inc.®.

File Number: A9258

Volume: 1

Original Certification Date: March 29, 2000

ISO 9001:2000 Issue Date: February 27, 2003

Revision Date: October 3, 2004

Renewal Date: February 26, 2006

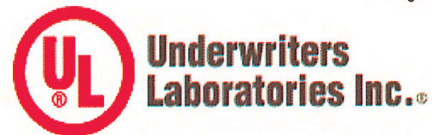
S. Joe Bhatia
Executive Vice President, International



Certificate of Compliance

Certificate Number 20040729-E207764
Report Reference E207764, 2004 July 29
Issue Date 2004 July 29

Page 1 of 1



Issued to: **GAON CABLE CO LTD**
408 3RD PALBOK-DONG, DEOKJIN-GU, CHONJU CITY
CHONBUK, KOREA


This is to certify that representative samples of **Communications Cable**
Types CMR, CM, and CMX

Have been investigated by Underwriters Laboratories Inc.® in accordance with the Standard(s) indicated on this Certificate.


Standard(s) for Safety: UL 444, Communications Cables
CSA C22.2 No. 214


Additional Information: CAT. 6, rating 75°C for UL and CUL Listing

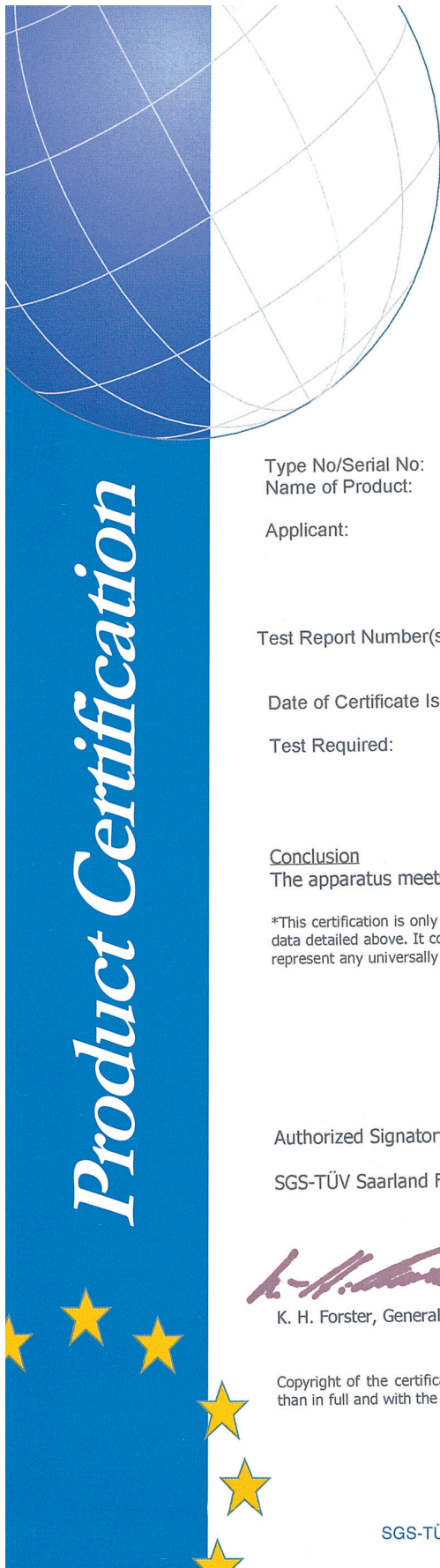
Only those products bearing the UL Listing Mark for the US and Canada should be considered as being covered by UL's Listing and Follow-Up Service meeting the appropriate requirements for US and Canada.

The UL Listing Mark for the US and Canada generally includes: the UL in a circle symbol with "C" and "US" identifiers:  the word "LISTED"; a control number (may be alphanumeric) assigned by UL; and the product category name (product identifier) as indicated in the appropriate UL Directory.

Look for the UL Listing Mark on the product

Issued by: 
EunJu Lee
Underwriters Laboratories Inc.

Reviewed by: 
SooKil Park
Underwriters Laboratories Inc.



Member of the
SGS-Group and TÜV Saarland e.V.

CERTIFICATE
of EMC Compliance

Certificate No: EMC/6042/05/0014

Type No/Serial No: CAT.6 (CM, CMX, CMR, LSZH)
Name of Product: LAN UTP CABLE

Applicant: GAON Cable Co.,Ltd.
LG Mapo Bldg., 4F 275, Gongdeok-Dong,
Mapo-Gu, Seoul, 121-721, Korea

Test Report Number(s): 65099MA

Date of Certificate Issue: February 04, 2005

Test Required: ISO/IEC 11801
EN 50173
ANSI / TIA / EIA -568-B.2-1

Conclusion

The apparatus meets the requirements of the above standards.

*This certification is only valid for the equipment and configuration described, and in conjunction with the test data detailed above. It contains the result of the single examination of the subject being in hand and does not represent any universally valid decision concerning the quality of any other subject of the current production.



Authorized Signatory:

SGS-TÜV Saarland Forster GmbH

K. H. Forster, General Manager

Copyright of the certificate is owned by SGS-TÜV Saarland Forster GmbH and may not be reproduced other than in full and with the prior approval of the General Manager of SGS-TÜV Saarland Forster GmbH.

SGS-TÜV Saarland Forster GmbH, Saarbrücker Str. 1, 66706 Perl, Germany
Phone +49 (6866) 93200 Fax +49 (6866) 93201

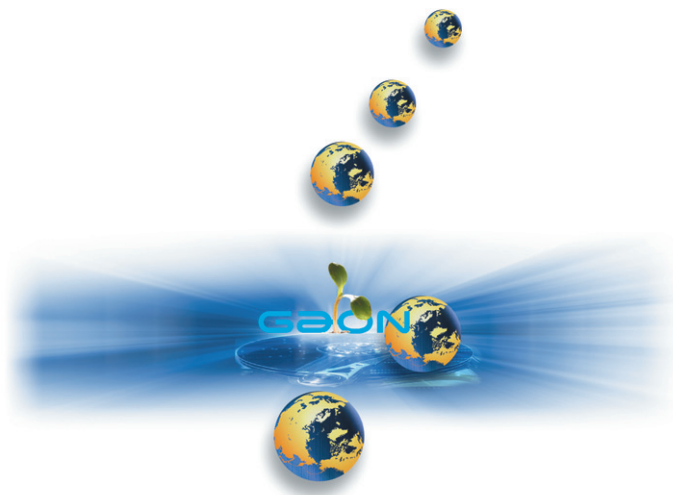
LAN CABLE

Local Area Network



UTP
Unshielded Twisted Pair

FTP
Foiled Twisted Pair



GAON GAON CABLE CO., LTD.

HEAD OFFICE

4F., LG Mapo Bldg., 275, Gongdeok-dong, Mapo-gu, Seoul 121-721, Korea
TEL. +82-2-705-3971, 3980 FAX. +82-2-711-6419

GUNPO PLANT(Power Plant & R&D Center)

166, Geumjeong-dong, Gunpo City, Gyeonggi-do 435-824, Korea
TEL. +82-31-459-6257, 6226 FAX. +82-31-459-6219

JEONJU PLANT(Telecommunication Plant & R&D Center)

408, 3rd, Palbok-dong, Deokjin-gu, Jeonju City, Jeonbuk Prov. 561-203, Korea
TEL. +82-63-210-5453, 5450 FAX. +82-63-212-8577

<http://www.gaoncable.com>